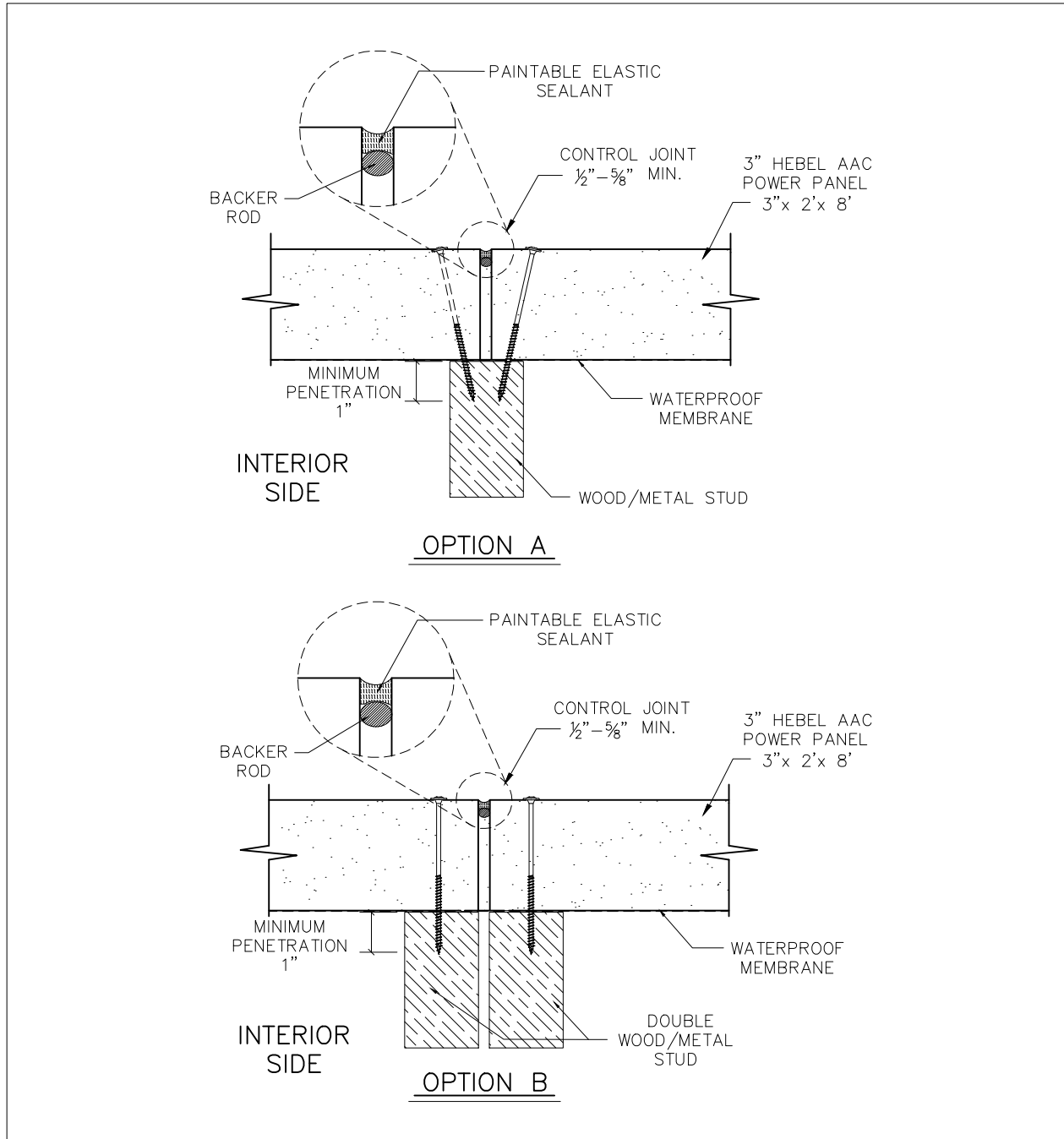


## Control Joint Top View (3")



### NOTES

- 1.-NOT SCALE.
- 2.-DIMENSIONS INCHES.
- 3.-STEEL REINFORCEMENT IN POWER PANEL FY=70 ksi
- 4.- AAC STRENGTH CLASS AAC-4/500- F'aac= 580 psi.

- 5.- CONTROL JOINTS TO BE LOCATED MAX. @ 20' HORIZONTALLY AND VERTICALLY.
- 6.- CONTROL JOINTS TO BE FILLED WITH BACKER ROD AND PAINTABLE ELASTIC SEALANT.