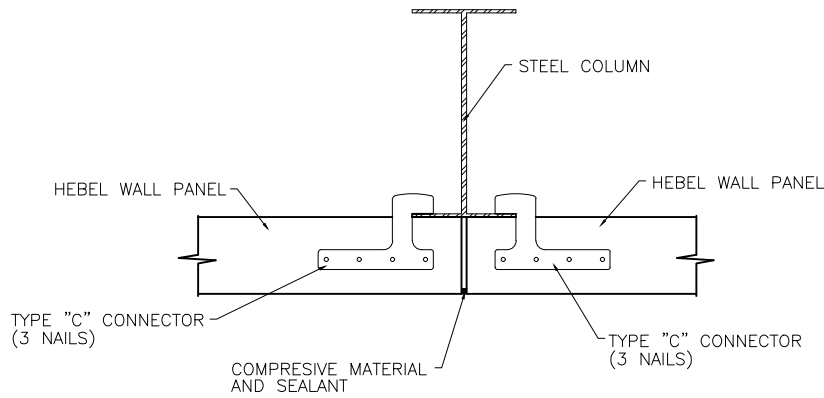
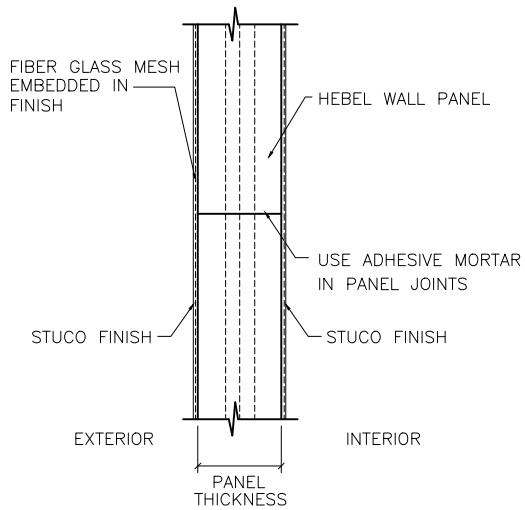


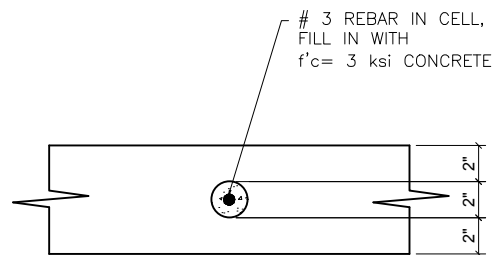
## HORIZONTAL WALL PANEL WITH SMOOTH FINISH



**A**  
 WP-11  
**WALL PANEL CONNECTION**  
 W/S



**B**  
 WP-11  
**PANEL JOINT**  
 W/S



**C**  
 WP-11  
**SECTION**  
 W/S

### NOTES

- 1.- DIMENTIONS IN INCHES.
- 2.- FOR BASE COAT AND ACRYLIC PASTES USE FIBER GLASS MESH IN 100% OF THE SURFACE.